



# SURFACE COATINGS SELECTION GUIDE



**Vicafil™** non reactive coatings are designed to improve drawing performance. They are applied after acid cleaning or after mechanical descaling (brushing, shot blasting, etc....)

This technology is often used on stainless steel and high carbon steel for the drawing of wires, bars or profiles and for cold heading applications.

Comparing to phosphate coating, these non reactive coatings are based on mineral salts and they are typically developed because:

- They are very much easier to implement and maintain,
- It is an environmentally friendly technology,
- They are more efficient and allow process savings.

The wide range of salts and formulations used enable us to provide customers with products answering their needs in terms of:

- Coating adhesion
- Artificial roughness
- Drying ability

Alternative solutions are also available to replace zinc phosphate coating for drawing of cold heading wire. Such surface treatments offer a more cost effective solution.

To meet forthcoming regulation on borax and to anticipate future changes, CONDAT now offers an extensive choice of products, including both low-borax and borax-free alternatives.

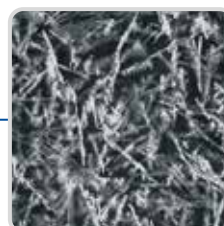
- The low borax range is designed with alternative technologies for an economical optimisation of this environmental constraint.
- The zero borax range is designed to address the most stringent environmental constraints for health and safety.

## APPLICATIONS

- Wire drawing of carbon steel
- Wire drawing of stainless steel
- Wire for cold-heading (Steel and stainless steel)
- Drawing of straight bars (Steel and stainless steel)



TS 4408



TS 7853



TS 7113

**CONDAT**

COMMITTED TO RESPONSIBLE PERFORMANCE



# SURFACE COATINGS SELECTION GUIDE



unless  
indicated

		Wire drawing		Cold heading		Bars & profiles		
		Carbon Steel	Stainless Steel	Carbon Steel	Stainless Steel	Carbon Steel	Stainless Steel	
Non reactive coatings	TS 7853*	•				•		Versatile. Very good corrosion inhibition.
	TS 7113	•	•	•	•	•	•	Phosphate free. Versatile.
	TS 7537	•				•		Spooling agent. Plating quality.
	TS 4040*		•		•		•	Batch or in line application.
	TS 4408*		•		•		•	Versatile. Wire drawing and cold heading.
	TS 4445*		•		•		•	High coat weight. Very low moisture pick-up.
	TS 4915*		•		•		•	Very good corrosion inhibition. Also for ferritic Stainless Steel.
	TS 7300 AD	•				•		Performance Additive for Borax. Coat weight improver.
Phosphatation	COLPHOS P10	•		•		•		Zinc phosphate, nitrate-nitrite accelerated. Low sludging. Low consumption.
Reactive Coating	COLLUBE 551	•		•		•		Reactive soap after phosphate coating. Versatile. High Performance.
Self lubricating coating	SUPRALUB 35					•	•	Batch application. Oven drying. One or two drawings in succession.
Neutralizer	NL	•				•		Prior to non reactive coatings.

\* : <6,5% Borax



## CONDAT